

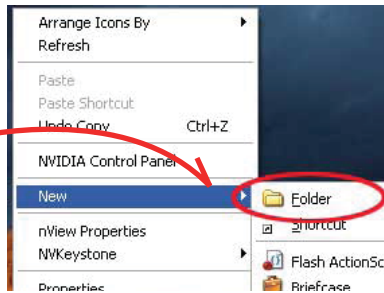
Associating FLV files to Wimpy FLV Player

Performing these steps will cause your PC to launch FLV files in Wimpy FLV Player by double clicking on a file, or by dragging a file onto the Wimpy FLV Player icon.

1

Create a new folder on your PC. Right Click on an empty area on your desktop and choose:

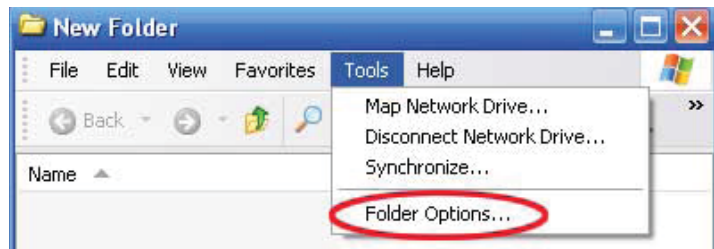
New > Folder



2

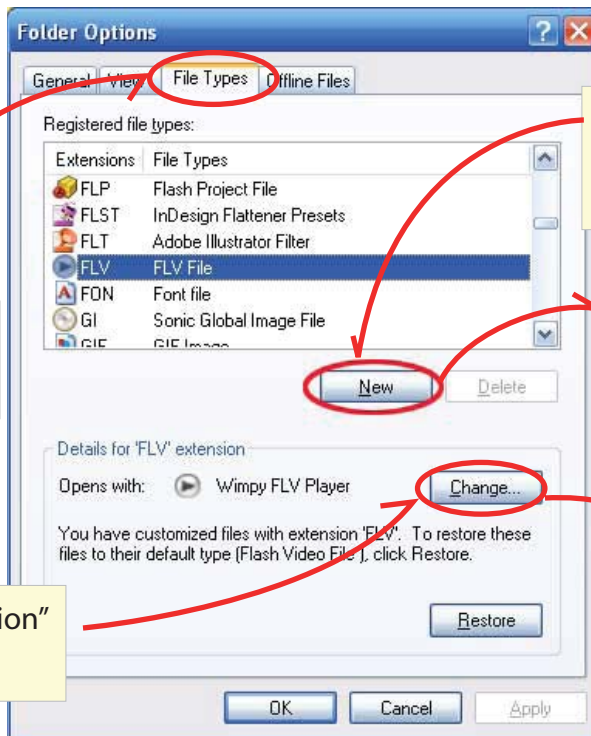
Double click on the newly created folder and from the menu at the top of the folder select:

Tools > Folder Options



3

Click the "File Types" tab and scroll down to the F's.



If "FLV" is not listed, click the "New" button and enter: FLV



4

In the "Details for FLV extension" section, click "Change"

If Wimpy FLV Player doesn't show up in the list, click "Browse" and navigate to where "Wimpy FLV Player.exe" is located.

